

15013

Soil (vacuum container)

296.2 grams



Figure 1: SESC used to collect soil sample 15013 from under Lunar Module. The wire was caught in the seal and the container was not under vacuum when opened. NASA S71-44784.

Introduction

This soil was collected from the surface under the Lunar Module and placed in a special environmental sample container (SESC). **However, when the sample was opened in Berkeley by Burlingame, it was found to not have sealed (see figure 1).**

Simoneit et al. (1973) found that the breakdown products (NO_2 , H_2O , CO_2) of the LM exhaust were present in this sample, but could be released at relatively low temperatures in a vacuum (figure 6).

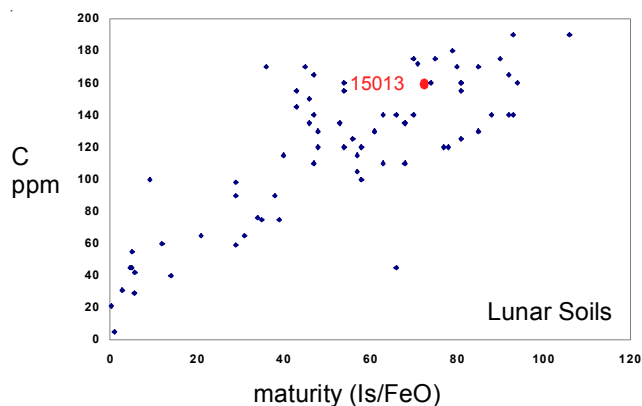


Figure 2: Maturity index and carbon content of 15013 (data from Moore et al. 1973, Morris 1978).

Petrography

15013 is a mature soil, based on $I_s/\text{FeO} = 77$ (Morris 1978) and average grain size = 52 microns (figure 2). Another soil taken near the LM is 15020 ($I_s/\text{FeO} = 70$), with agglutinate content 48 % (Basu 1981). Experiments should be done on both sample – for comparison.

The particles extracted from 15013 are shown in figures 8a,b. *They have apparently escaped notice by lunar petrologists.*

Chemistry

Christian et al. (1976) and Korotev (1987) have analyzed 15013 (table 1, figures 3 and 4). It is similar in composition to 15020, which was collected nearby.

Moore et al. (1973) and Des Marais et al. (1973) determined 150 ppm and 103 ppm carbon, respectively (figure 2). Kothari and Goel (1972) and Muller (1973) reported 98 ppm and 113 ppm nitrogen, respectively.

Other Studies

Simoneit et al. (1973) seems to have found “lightly bound” exhaust products from the LM (figure 6).

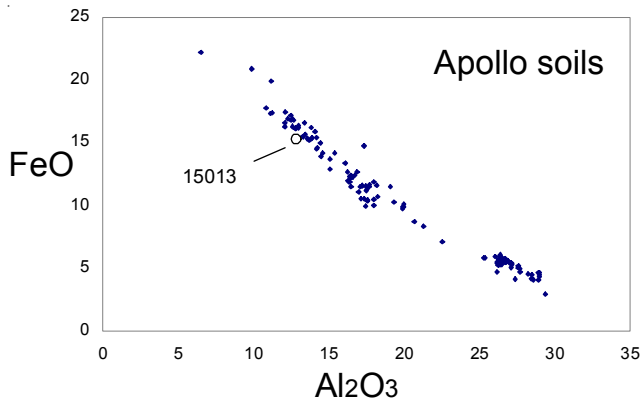
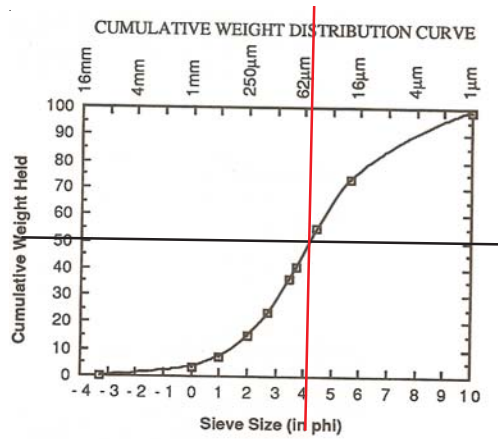


Figure 3: Composition diagram for all Apollo soil samples indicating 15013.



Average grain size = 53 microns

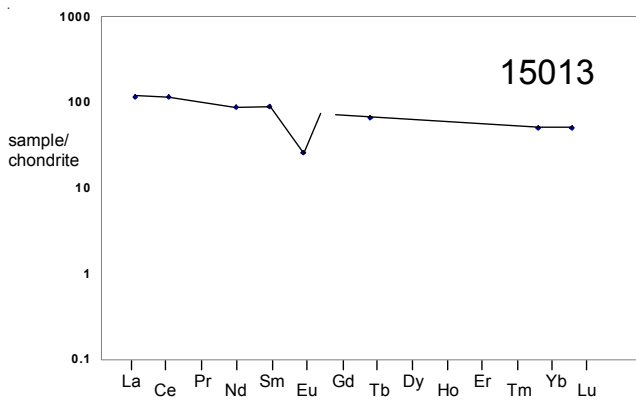


Figure 4: Normalized rare-earth-element diagram for 15013 (Korotev 1987).

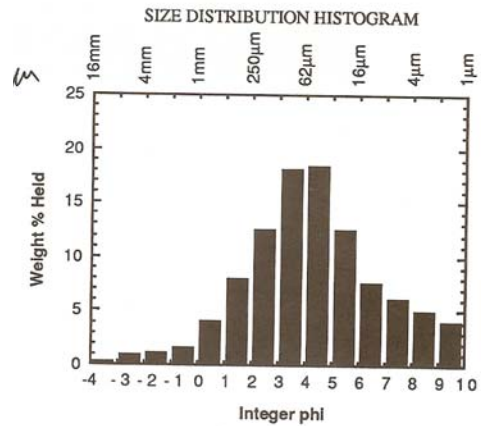
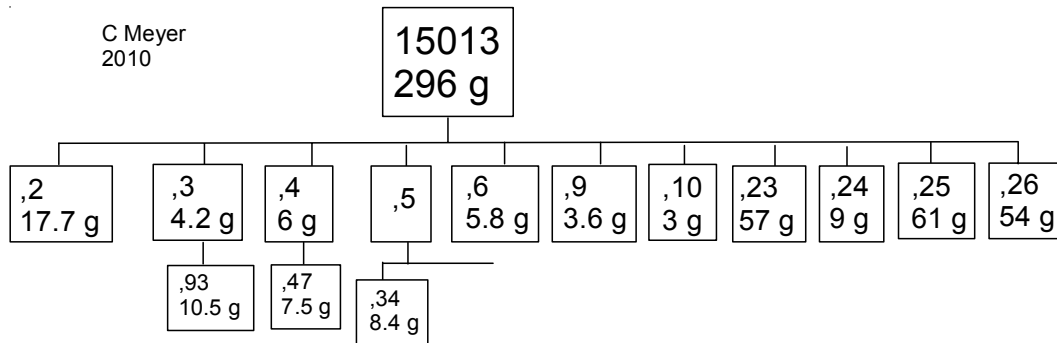


Figure 5: Grain size distribution of 15013 (Graf 1993).



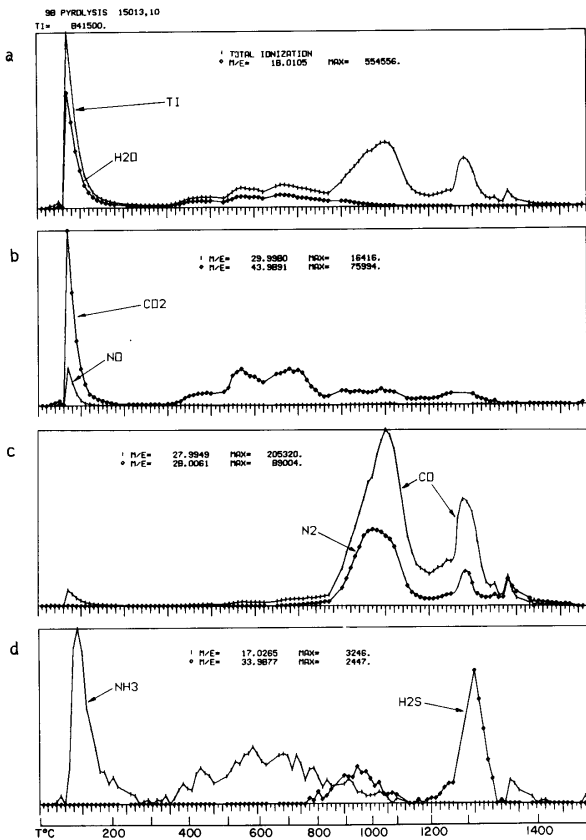


Figure 6: Temperature release pattern for heating soil sample 15013, showing breakdown products of Lunar Module exhaust (hydrozene and N2O4 ?) - from Simoneit et al. 1973.

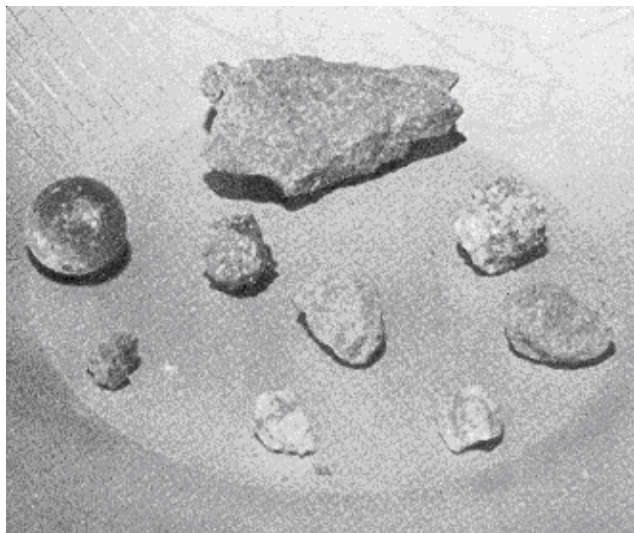


Figure 8a: Small rock particles found in 15013 (from Simoneit et al.1972).

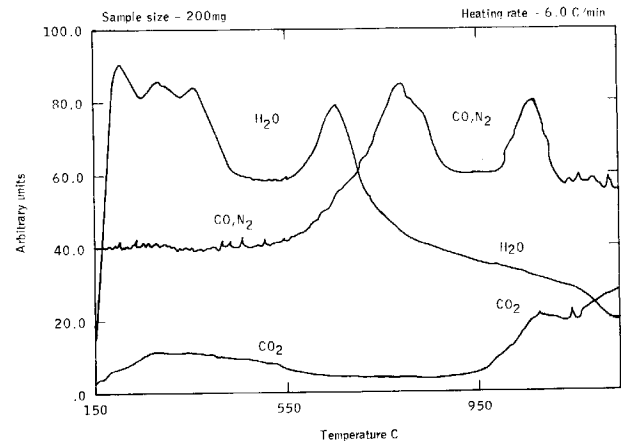


Figure 7: Volatile release curve for typical mature lunar soil (15020) for comparison (from Gibson and Moore 1972).

Processing

There was a mistake in the early documentation (Swann et al. 1971, 1972; Graf 1993) related to the numbering of SESC containers 15014 (trench bottom, station 8) and 15013 (collected under LM). In the early documentation, these sample numbers were switched. However, by the time 15013 was sent to Berkeley the numbering was correct.

15013 was transferred directly to Burlingame, opened in He in Berkeley and distributed directly to PIs (Simoneit et al. 1971).

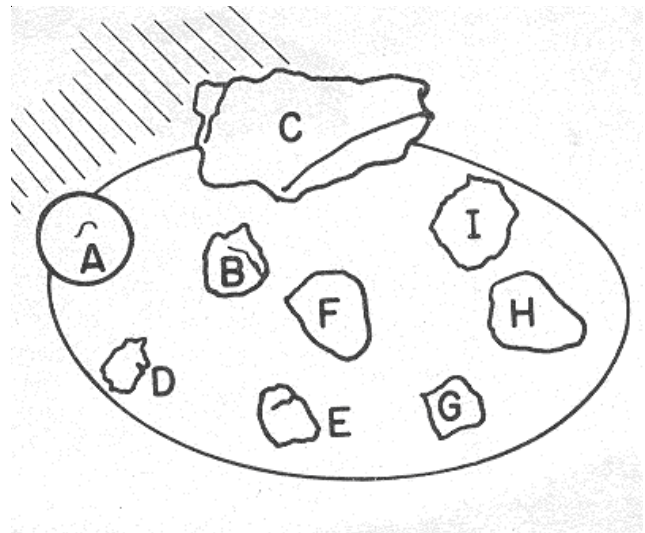


Figure 8b: Sketch of small rock particles found in 15013 (from Simoneit et al.1972).

Table 1. Chemical composition of 15013 (and 15020).

reference weight	Christian76		Korotev87		15021 (for ref.)		Wanke73	
					Laul73			
SiO2 %	46.94	(a)					47.07	(b)
TiO2	1.72	(a)	1.97	(b)	1.8	1.8	(b) 1.75	(b)
Al2O3	14.46	(a)	14.8	(b)	14.1	14.1	(b) 14.17	(b)
FeO	14.98	(a)	14.8	(b)	15	15	(b) 14.92	(b)
MnO	0.21	(a)	0.2	(b)	0.19	0.184	(b) 0.18	(b)
MgO	10.35	(a)	10.8	(b)		10	(b) 10.44	(b)
CaO	10.38	(a)	10	(b)	10.8	10.7	(b) 8.95	(b)
Na2O	0.44	(a)	0.46	(b)	0.434	0.426	(b) 0.39	(b)
K2O	0.22	(a)			0.22	0.22	(b) 0.2	(b)
P2O5	0.22	(a)						
S %								
sum								
Sc ppm			28.7	(b)	28	27	(b) 26.6	(b)
V			115	(b)	114	113	(b)	
Cr	2395	(a)	2780	(b)	2737	2668	(b) 2500	(b)
Co			76.5	(b)	40	42	(b) 42	(b)
Ni			278	(b)				
Cu								
Zn								
Ga								
Ge ppb								
As								
Se								
Rb								
Sr			140	(b)				
Y								
Zr			410	(b)	350	400	(b)	
Nb								
Mo								
Ru								
Rh								
Pd ppb								
Ag ppb								
Cd ppb								
In ppb								
Sn ppb								
Sb ppb								
Te ppb								
Cs ppm			0.27	(b)				
Ba			290	(b)	320	300	(b)	
La			27.2	(b)	26	27	(b) 25	(b)
Ce			70	(b)	73	71	(b) 65	(b)
Pr								
Nd			40	(b)				
Sm			13.2	(b)	12.9	12.9	(b) 8.8	(b)
Eu			1.455	(b)	1.4	1.4	(b) 1.34	(b)
Gd								
Tb			2.43	(b)	2.3	2.3	(b)	
Dy							15	(b)
Ho							2.3	(b)
Er								
Tm								
Yb			8.2	(b)	9.5	8.7	(b) 8.3	(b)
Lu			1.23	(b)	1.3	1.3	(b) 1.2	(b)
Hf			10	(b)	9.9	10	(b)	
Ta			1.34	(b)	1.2	1.2	(b)	
W ppb								
Re ppb								
Os ppb								
Ir ppb			7.9	(b)				
Pt ppb								
Au ppb			2.6	(b)				
Th ppm			5.2	(b)				
U ppm			1.1	(b)				

technique: (a) "microchemical"; (b) INAA

References

- Burlingame A.L., Holland P., McFadden W.H., Simoneit B.R., Wilder J.T. and Wzzolek P.C. (1971) UCB Space Science Laboratory organic clean room and lunar material transfer facilities. Univ. California, Space Sciences Lap Rpt. May 18
- Butler (1972) Lunar Sample Information Catalog: Apollo 15. MSC 03209
- Chang S., Mack R., Gibson E.K. and Moore G.W. (1973) Simulated solar wind implantation of carbon and nitrogen ions into terrestrial basalt and lunar fines. *Proc. 4th Lunar Sci. Conf.* 1509-1522.
- Chang S., Lawless J., Romiez M., Kaplan I.R., Petrowski C., Sakai H. and Smith J.W. (1974) Carbon, nitroge n and sulfur abundances in lunar fines 15012 and 15013 – abundances, distributions and isotopic compositions. *Geochim. Cosmochim. Acta* **38**, 853-872.
- Christian R.P., Berman S., Dwornik E.J., Rose H.J. and Schnepfe M.M. (1976) Composition of some Apollo 14, 15 and 16 lunar breccias and two Apollo 15 soils (abs). *Lunar Sci. VII*, 138-140. LPI
- DesMarais D.J., Hayes J.M. and Meinshein W.G. (1973a) The distribution in lunar soil of carbon released by pyrolysis (abs). *Lunar Sci. IV*, 178-181. LPI.
- DesMarais D.J., Hayes J.M. and Meinshein W.G. (1973b) The distribution in lunar soil of carbon released by pryrolysis. *Proc. 4th Lunar Sci. Conf.* 1543-1558.
- DesMarais D.J., Hayes J.M. and Meinshein W.G. (1977) The distribution in lunar soil of hydrogen released by pryrolysis. *Proc. 5th Lunar Sci. Conf.* 1811-1822.
- DesMarais D.J., Basu A., Hayes J.M. and Meinshein W.G. (1975) Evolution of carbon isotopes, agglutinates and the lunar regolith. *Proc. 6th Lunar Sci. Conf.* 2353-2374.
- Farr T.G., Bates B., Ralph R.L. and Adams J.B. (1980) Effects of overlapping optical absorption bands of pyroxene and glass on the reflectance spectra of lunar soils (abs). *Lunar Sci. XI*, 276-278. LPI.
- Fox S.W., Harada K. and Hare P.E. (1973) Accumulated analyses of amino acid precursors in returned lunar samples. *Proc. 4th Lunar Sci. Conf.* 2241-2248.
- Goel P.S., Shukla P.N., Kothari B.K. and Garg A.N. (1974) Solar wind as source of nitrogen in lunar fines (abs). *Lunar Sci. V*, 270-272. LPI.
- Holland P.T., Simoneit B.R., Wszolek P.C. and Burlingame A.L. (1972) Compounds of carbon and other volatile elements in Apollo 14 and 15 samples. *Proc. 3rd Lunar Sci. Conf.* 2131-2149.
- Kaplan I.R., Kerridge J.F. and Petrowski C. (1976) Light element geochemistry of the Apollo 15 site. *Proc. 7th Lunar Sci. Conf.* 481-492.
- Keihm S.J. and Langseth M.G. (1973) Surface brightness temperatures at he Apollo 17 heat flow site – thermal conductivity of the upper 15 cm of the regolith. *Proc. 4th Lunar Sci. Conf.* 2503-2514.
- Korotev R.L. (1987) Mixing levels, the Apennine Front soil component, and compositional trends in the Apollo 15 soils. *Proc. 17th Lunar Planet. Sci. Conf.* E411-431.
- Kothari B.K. and Goel P.S. (1972) Total nitrogen abundances in several lunar samples (abs). *Lunar Sci. IV*, 292- 293. LPI.
- Kothari B.K. and Goel P.S. (1973) Nitrogen in lunar samples. *Proc. 4th Lunar Sci. Conf.* 1587-1596.
- LSPET (1972) Apollo 15 Lunar samples – preliminary description. *Science* **175**, 363-375.
- Moore C.B. and Cripe J.D. (1974) Total sulfur contents of Apollo 15 and Apollo 16 lunar samples (abs). *Lunar Sci. V*, 523-525. LPI.
- Moore C.B., Lewis C.F. and Gibson E.K. (1972) Carbon and nitrogen in Apollo 15 lunar sample (abs). *In The Apollo 15 Lunar Samples* 316-318. LPI.
- Moore C.B., Lewis C.F. and Gibson E.K. (1973) Total carbon contents of Apollo 15 and 16 lunar samples. *Proc. 4th Lunar Sci. Conf.* 1613-1624.
- Morris R.V. (1978) The surface exposure (maturity) of lunar soils: Some concepts and Is/FeO compilation. *Proc. 9th Lunar Planet. Sci. Conf.* 2287-2298.
- Muller O. (1973) Chemically bound nitrogen contents of Apollo 16 and Apollo 15 lunar fines. *Proc. 4th Lunar Sci. Conf.* 1625-1634.
- Muller O. (1974) Solar wind nitrogen and idigenous nitrogen in Apollo 17 lunar samples. *Proc. 5th Lunar Sci. Conf.* 1907-1918.
- Muller O., Grallath E. and Tolg G. (1976) Nitrogen in lunar igneous rocks. *Proc. 7th Lunar Sci. Conf.* 1615-1622.

Petrowski C., Kaplan I.R. and Kerridge J.F. (1976) Light element geochemistry of the Apollo 15 site (abs). *Lunar Sci.* **VII**, 685-687. LPI.

Simoneit B.R., Wszolek P.C. and Burlingame A.L. (1972) Apollo 15 lunar samples: LM exhaust products in SESC 15013 (abs). *In The Apollo 15 Lunar Samples*, 286-290. LPI.

Simoneit B.R., Christiansen P.C. and Burlingame A.L. (1973) Volatile element chemistry of selected lunar, meteoritic and terrestrial samples. *Proc. 4th Lunar Sci. Conf.* 1635-1650.

Simoneit B.R., Wilder J.T., Wszolek P.C. and Burlingame A.L. (1972) UCB Space Science Laboratory organic clean room and lunar material transfer facilities. The transfer of pristine lunar material from the Apollo 15 SESC 15012 and SESC 15013. Univ. California Space Sciences Lab Rpt. June 10. 1-154.

Swann G.A., Hait M.H., Schaber G.G., Freeman V.L., Ulrich G.E., Wolfe E.W., Reed V.S. and Sutton R.L. (1971) Preliminary description of Apollo 15 sample environments. U.S.G.S. Interagency report : 36.

Swann G.A., Bailey N.G., Batson R.M., Freeman V.L., Hait M.H., Head J.W., Holt H.E., Howard K.A., Irwin J.B., Larson K.B., Muehlberger W.R., Reed V.S., Rennilson J.J., Schaber G.G., Scott D.R., Silver L.T., Sutton R.L., Ulrich G.E., Wilshire H.G. and Wolfe E.W. (1972) 5. Preliminary Geologic Investigation of the Apollo 15 landing site. *In Apollo 15 Preliminary Science Rpt.* NASA SP-289. pages 5-1-112.

Wanke H., Baddenhausen H., Balacescu A., Teschke F., Spettle B., Dreibus G., Palme H., Quijano-Rico M., Kruse H., Wlotzka F. and Begemann F. (1972) *Proc. 3rd Lunar Sci. Conf.* 1251-1268.